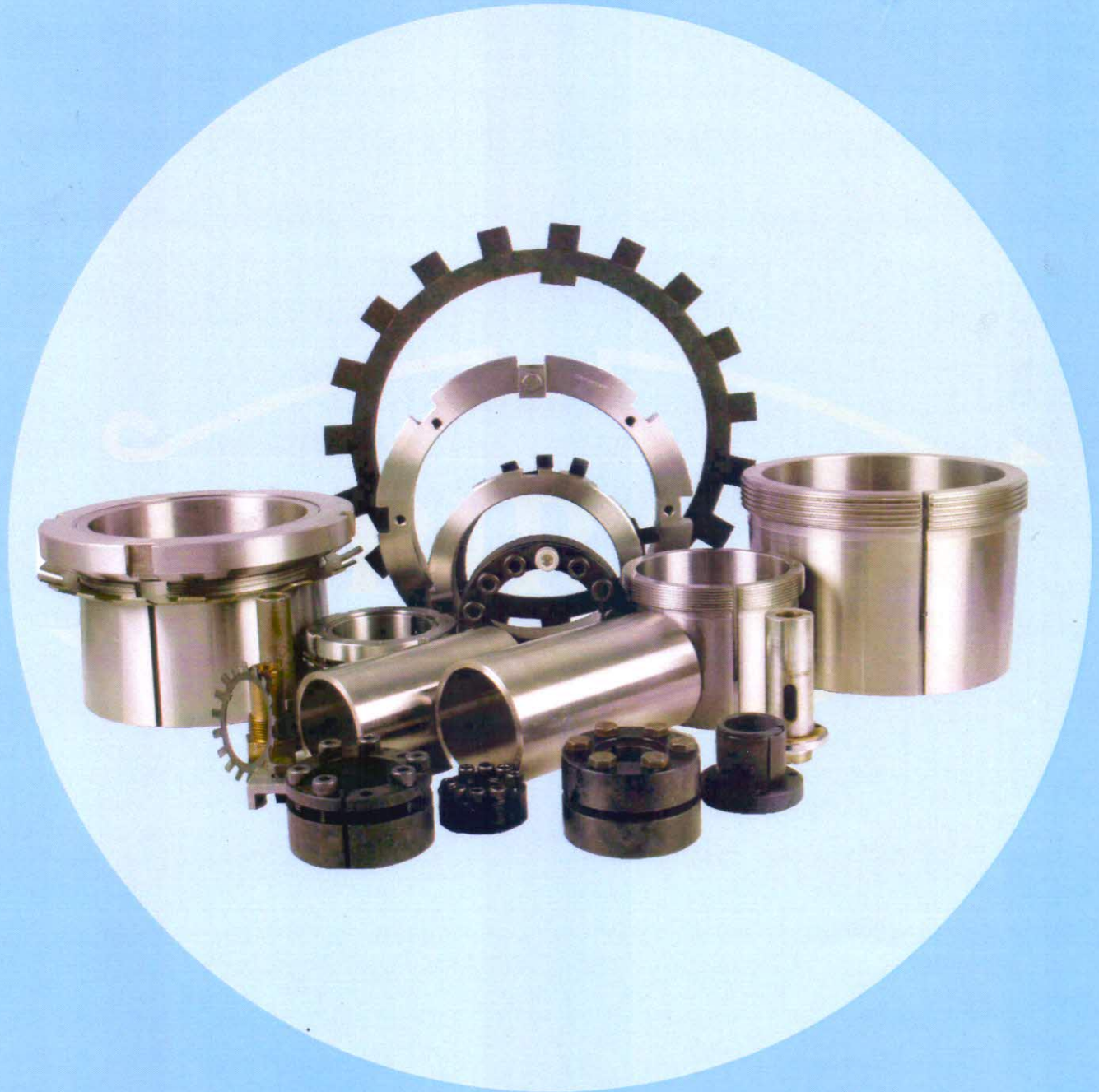


SHIRRAAM INDUSTRIES

(AN ISO 9001 : 2008 CERTIFIED COMPANY)



**Bearing Accessories &
Locking Devices**



(An ISO 9001 : 2008 Certified Company)

This catalogue contains all the necessary dimensions for Adapter Sleeves, Withdrawal Sleeves and Lock Nuts. The range is from 17 mm to 600 mm shaft diameter.

For easy identification of Sleeves and Lock nuts the following general letters and symbols used by the other manufacturers are used in this catalogue :

- H/AH/KM/HM - Metric dimension and standard design.
- HE - Bore diameter in multiples of ¼ inch.
- AHX - X is added to confirm to ISO International Standards, usually applies to the thread diameter or to the bore.

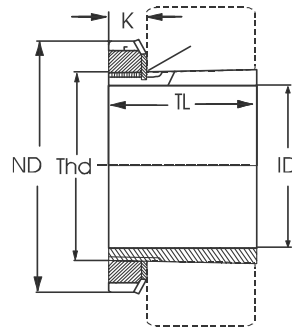
SHRIRAAM(SRI) Sleeves are designed to match with standard bearings of any make.

While mounting a bearing on a shaft by using a Sleeve the radial internal clearance of the bearing is reduced. The clearance reduction is a measure of the expansion of inner ring of the bearing which is determined by the amount of the axial displacement of the bearing on the adapter sleeve or withdrawal sleeve. The following table gives guidelines regarding values of clearance reduction and axial displacement applicable to the spherical roller bearings :

Tolerances for Mounting of Tapered Bore Bearings with Sleeves										
Bearing Bore		Reduction in Radial Clearance		Axial Displacement				Smallest radial clearance in mounted condition		
				Taper 1:12		Taper 1:30				
Over	Incl.	Min.	Max.	Min.	Max.	Min.	Max.	Normal	C ₃	C ₄
30	40	0.020	0.025	0.32	0.40	-	-	0.015	0.025	0.04
40	50	0.025	0.030	0.40	0.46	-	-	0.020	0.030	0.05
50	65	0.030	0.040	0.46	0.61	-	-	0.025	0.035	0.05
65	80	0.040	0.050	0.61	0.76	-	-	0.025	0.040	0.07
80	100	0.045	0.060	0.71	0.91	-	-	0.035	0.050	0.08
100	120	0.050	0.070	0.76	1.12	1.90	2.80	0.050	0.065	0.10
120	140	0.065	0.090	1.01	1.42	2.52	3.55	0.055	0.080	0.11
140	160	0.075	0.100	1.22	1.62	3.05	4.05	0.055	0.090	0.13
160	180	0.080	0.110	1.32	1.73	3.30	4.32	0.060	0.100	0.15
180	200	0.090	0.120	1.42	1.93	3.55	4.82	0.070	0.110	0.16
200	225	0.100	0.140	1.62	2.24	4.05	5.60	0.080	0.120	0.18
225	250	0.110	0.150	1.73	2.43	4.32	6.08	0.090	0.130	0.20
250	280	0.120	0.170	1.93	2.74	4.82	6.85	0.100	0.140	0.22
280	315	0.130	0.190	2.04	3.04	5.10	7.60	0.110	0.150	0.24
315	355	0.150	0.210	2.43	3.36	6.08	8.40	0.120	0.170	0.26
355	400	0.170	0.230	2.74	3.66	6.85	9.15	0.130	0.190	0.29
400	450	0.200	0.260	3.14	4.06	7.85	10.15	0.130	0.200	0.31
450	500	0.210	0.280	3.36	4.37	8.40	10.92	0.160	0.230	0.35

ADAPTER SLEEVES

with locknut and locking washer



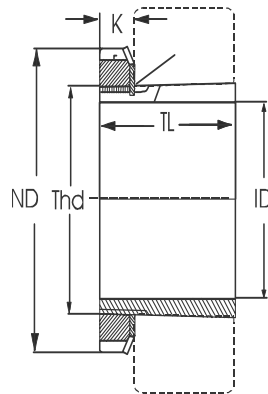
with lock washer MB
taper 1 : 12



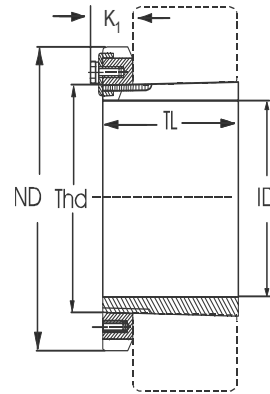
Shaft mm	Symbol	Dimensions					Appx. Weight Kg.	Matching Bearings Size			
		Thd	Id	TL	ND	k					
17	H204	20	17	32	24	7	0.041	1204K 1304K 2204K 2304K			
	H304	20	17	32	28	7	0.045				
	H2304	20	17	32	31	7	0.049				
20	H205	25	20	26	38	8	0.07	1205K 20205K 2205K 1305K 20305K 22205K 2305K			
	H305	25	20	29	38	8	0.075				
	H2305	25	20	35	38	8	0.087				
25	H206	30	25	27	45	8	0.125	1206K 20206K 2206K 1306K 20306K 22206K 2306K			
	H306	30	25	31	45	8	0.142				
	H2306	30	25	38	45	8	0.165				
30	H207	35	30	29	52	9	0.125	1207K 20207K 2207K 1307K 20307K 22207K 2307K			
	H307	35	30	35	52	9	0.142				
	H2307	35	30	43	52	9	0.165				
35	H208	40	35	31	58	10	0.174	1208K 20208K 2208K 1308K 20308K 21308K 22208K			
	H308	40	35	36	58	10	0.189				
	H2308	40	35	46	58	10	0.224				
40	H209	45	40	33	65	11	0.227	1209K 20209K 2209K 1309K 20309K 21309K 22209K 2309K 22309K			
	H309	45	40	39	65	11	0.248				
	H2309	45	40	50	65	11	0.280				
45	H210	50	45	35	70	12	0.274	1210K 20210K 2210K 1310K 20310K 21310K 22210K 2310K 22310K			
	H310	50	45	42	70	12	0.308				
	H2310	50	45	55	70	12	0.362				
50	H211	55	50	37	75	12	0.308	1211K 20211K 2211K 1311K 20311K 21311K 22211K 2311K 22311K			
	H311	55	50	45	75	12	0.345				
	H2311	55	50	59	75	12	0.420				
55	H212	60	55	38	80	13	0.346	1212K 20212K 2212K 1312K 20312K 21312K 22212K 2312K 22312K			
	H312	60	55	47	80	13	0.394				
	H2312	60	55	62	80	13	0.481				
60	H213	65	60	40	85	14	0.401	1213K 20213K 2213K 1313K 20313K 21313K 22213K 2313K 22313K			
	H313	65	60	50	85	14	0.458				
	H2313	65	60	65	85	14	0.557				
	H214	70	60	41	92	14	0.593		1214K 20214K 2214K 1314K 20314K 21314K 22214K 2314K 22314K		
	H314	70	60	52	92	14	0.723				
	H2314	70	60	68	92	14	0.897				
65	H215	75	65	43	98	15	0.707	1215K 20215K 2215K 1315K 20315K 21315K 22215K 2315K 22315K			
	H315	75	65	55	98	15	0.831				
	H2315	75	65	73	98	15	1.05				
70	H216	80	70	46	105	17	0.882	1216K 20216K 2216K 1316K 20316K 21316K 22216K 2316K 22316K			
	H316	80	70	59	105	17	1.03				
	H2316	80	70	78	105	17	1.28				
75	H217	85	75	50	110	18	1.02	1217K 20217K 2217K 1317K 20317K 21317K 22217K 2317K 22317K			
	H317	85	75	63	110	18	1.18				
	H2317	85	75	82	110	18	1.45				
80	H218	90	80	52	120	18	1.19	1218K 20218K 2218K 1318K 20318K 21318K 22218K 2318K 22318K			
	H318	90	80	65	120	18	1.39				
	H2318	90	80	86	120	18	1.69				
85	H219	95	85	55	125	19	1.37	1219K 20219K 2219K 1319K 20319K 21319K 22219K 2319K 22319K			
	H319	95	85	68	125	19	1.56				
	H2319	95	85	90	125	19	1.92				

ADAPTER SLEEVES

with locknut and locking washer



with lock washer MB
taper 1 : 12



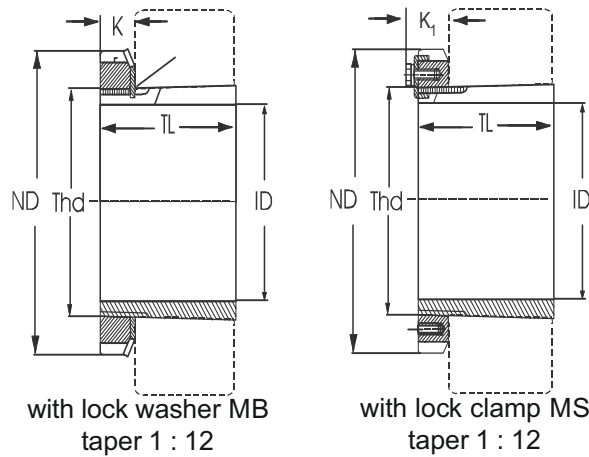
with lock clamp MS
taper 1 : 12



Shaft mm	Symbol	Dimensions						Appx. Weight Kg.	Matching Bearings Size					
		Thd	Id	TL	ND	k	k1							
90	H 220	100	90	58	130	20		1.49	1220K	20220K				
	H 320	100	90	71	130	20		1.69	2220K	1320K	20320K	21320K	22220K	
	H 3120	100	90	76	130	20		1.80	23120K					
	H 2320	100	90	97	130	20		2.15	2320K	22320K	23220K			
95	H 221	105	95	60	140	20		1.72	1221K	20221K				
	H 321	105	95	74	140	20		1.95	1321K					
100	H 222	110	100	63	145	21		1.93	1222K	20222K				
	H 322	110	100	77	145	21		2.18		20322K	22222K	21322K		
	H 3122	110	100	81	145	21		2.25		23122K				
	H 2322	110	100	105	145	21		2.74	22322K	23222K				
110	H 3024	120	110	72	145	22		1.93	20224K	23024K				
	H 3124	120	110	88	155	22		2.64	20324K	23124K	22224K			
	H 2324	120	110	112	155	22		3.19	22324K	23224K				
115	H 3026	130	115	80	155	23		2.85	20226K	23026K				
	H 3126	130	115	92	165	23		3.66	20326K	23126K	22226K			
	H 2326	130	115	121	165	23		4.6	22326K	23226K				
125	H 3028	140	125	82	165	24		3.16	20228K	23028K				
	H 3128	140	125	97	180	24		4.34	20328K	23128K	22228K			
	H 2328	140	125	131	180	24		3.55	22328K	23228K				
135	H 3030	150	135	87	180	26		3.89	20230K	23030K				
	H 3130	150	135	111	195	26		5.52	20330K	23130K	22230K			
	H 2330	150	135	139	195	26		6.63	22330K	23230K				
140	H 3032	160	140	93	190	28		5.21	20232K	23032K				
	H 3132	160	140	119	210	28		7.67	20332K	23132K	22232K			
	H 2332	160	140	147	210	28		9.14	22332K	23232K				
150	H 3034	170	150	101	200	29		5.99	20234K	23034K				
	H 3134	170	150	122	220	29		8.38	20334K	23134K	22234K			
	H 2334	170	150	154	220	29		10.20	22334K	23234K				
160	H 3036	180	160	109	210	30		6.83	20236K	23036K	20336K			
	H 3136	180	160	131	230	30		9.50	20336K	23136K	22236K			
	H 2336	180	160	161	230	30		11.3	22336K	23236K				
170	H 3038	190	170	112	220	31		7.45	20238K	23038K				
	H 3138	190	170	141	220	31		10.8		23138K	22238K			
	H 2338	190	170	169	220	31		12.6	22338K	23238K				
180	H 3040	200	180	120	240	32		9.19	20240K	23040K	20340K			
	H 3140	200	180	150	250	32		12.1		23140K	22240K			
	H 2340	200	180	176	250	32		13.9	22340K	23240K				
200	H 3044	220	200	126	260	30		10.3	20244K	23044K	20344K			
	H 3144	220	200	161	280	35	40	14.7		23144K	22244K			
	H 2344	220	200	186	280	35		16.80	22344K	23244K				
220	H 3048	240	220	133	290	34		13.2	20248K	23048K	20343K			
	H 3148	240	220	172	300	37	45	17.3		23148K	22248K			
	H 2348	240	220	199	300	37		19.85	22348K	23248K				
240	H 3052	260	240	145	310	34		15.3	20252K	23052K	22252K			
	H 3152	260	240	190	330	39		22.0		23152K	22252K			
	H 2352	260	240	211	330	39	45	24.40	22352K	23252K				

ADAPTER SLEEVES

with locknut and locking washer



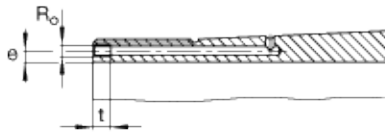
Shaft mm	Symbol	Dimensions						Appx. Weight Kg.	Matching Bearings Size	
		Thd	Id	TL	ND	k	k1			
260	H 3056	280	260	152	330	38	50	17.7	20256 K	23056K
	H 3156	280	260	195	350	41	50	24.5	23156K	22256K
	H 2356	280	260	224	350	41	50	28.1	23256K	22356K
280	H 3060	300	280	168	360	42	53	22.8	23060K	22260K
	H 3160	300	280	208	380	40	53	30.5	23160K	
	H 3260	300	280	240	380	40	53	34.1	23260K	
300	H 3064	320	300	171	380	42	54	24.6	23064K	22264K
	H 3164	320	300	226	400	42	56	35.5	23164K	
	H 3264	320	300	258	400	42	56	39.3	23264K	
320	H 3068	340	320	187	400	45	57	28.7	23068K	22268K
	H 3168	340	320	254	440	55	70	49.5	23168K	
	H 3268	340	320	288	440	55	70	54.6	23268K	
340	H 3072	360	340	158	420	45	57	30.5	23072K	22272K
	H 3172	360	340	259	460	58	73	54.2	23172K	
	H 3272	360	340	299	460	58	73	60.6	23272K	
360	H 3076	380	360	193	450	48	62	35.8	23076K	22276K
	H 3176	380	360	264	490	60	75	61.7	23176K	
	H 3276	380	360	310	490	60	75	69.6	23276K	
380	H 3080	400	380	210	470	52	66	41.3	23080K	22280K
	H 3180	400	380	272	520	62	81	70.6	23180K	
	H 3280	400	380	328	520	62	81	81.0	23280K	
400	H 3084	420	400	212	490	52	66	43.7	23084K	22284K
	H 3184	420	400	304	540	70	89	84.2	23184K	
	H 3284	420	400	352	540	70	89	94.0	23284K	

Oil ducts and pump connections shall be provided for Adapter Sleeves from H 3032 to H 3284 on request. Hydraulic Adapter Sleeves shall be ordered with a suffix of HG with usual symbol (eg. H 3032 HG)The details of pump connections are give below :

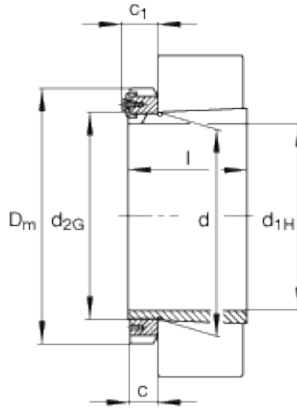
Symbol	Pump Connection Size	Distance from the sleeve bore	Tap Hole Depth
H 3032 HG to H 3260 HG	M 6	4.2	9
H 3064 HG to H 3284 HG	M 6	3.5	9

ADAPTER SLEEVES

with locknut and locking washer



Hydraulic adapter sleeve
Mounting Dimension

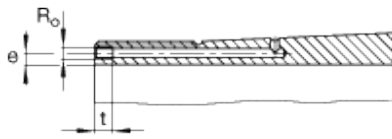


Taper 1:12
(taper 1:30 for H240, H241)

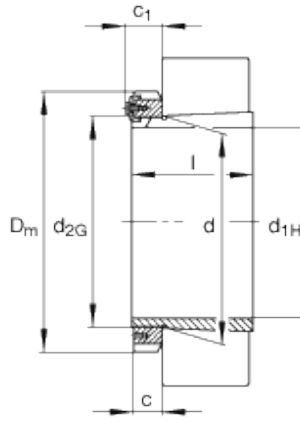
Shaft mm	Symbol	Dimensions						R _o	e	t	Appx. Weight Kg
		Thd	ID	TI	ND	k	k1				
410	H3988-HG	Tr440 x 5	410	189	520	60	75	M8	6.5	12	59
	H3088-HG	Tr440 x 5	410	228	520	60	75	M8	6.5	12	67.7
	H24088-HG	Tr440 x 5	410	294	520	60	75	M8	6.5	12	76.4
	H3188-HG	Tr440 x 5	410	307	560	70	89	M8	6.5	12	105
	H3288-HG	Tr440 x 5	410	361	560	70	89	M8	6.5	12	120
	H24188-HG	Tr440 x 5	410	372	560	70	89	M8	6.5	12	111
	H3388-HG	Tr440 x 5	410	426	560	70	89	M8	6.5	12	140
430	H3992-HG	Tr460 x 5	430	189	540	60	75	M8	6.5	12	61.4
	H3092-HG	Tr460 x 5	430	234	540	60	75	M8	6.5	12	71.8
	H24092-HG	Tr460 x 5	430	300	540	60	75	M8	6.5	12	80.8
	H3192-HG	Tr460 x 5	430	326	580	75	94	M8	6.5	12	118
	H3292-HG	Tr460 x 5	430	382	580	75	94	M8	6.5	12	134
	H24192-HG	Tr460 x 5	430	398	580	75	94	M8	6.5	12	124
	H3392-HG	Tr460 x 5	430	459	580	75	94	M8	6.5	12	61.4
450	H3996-HG	Tr480 x 5	450	200	560	60	75	M8	6.5	12	66.8
	H3096-HG	Tr480 x 5	450	237	560	60	75	M8	6.5	12	75.9
	H24096-HG	Tr480 x 5	450	301	560	60	75	M8	6.5	12	84.7
	H3196-HG	Tr480 x 5	450	335	620	75	94	M8	6.5	12	135
	H3296-HG	Tr480 x 5	450	397	620	75	94	M8	6.5	12	155
	H24196-HG	Tr480 x 5	450	408	620	75	94	M8	6.5	12	142
	H3396-HG	Tr480 x 5	450	462	620	75	94	M8	6.5	12	177
470	H39/500-HG	Tr500 x 5	470	208	580	68	83	M8	6.5	12	75.2
	H30/500-HG	Tr500 x 5	470	247	580	68	83	M8	6.5	12	85.2
	H240/500-HG	Tr500 x 5	470	309	580	68	83	M8	6.5	12	93.8
	H31/500-HG	Tr500 x 5	470	356	630	80	99	M8	6.5	12	145
	H32/500-HG	Tr500 x 5	470	428	630	80	99	M8	6.5	12	170
	H241/500-HG	Tr500 x 5	470	430	630	80	99	M8	6.5	12	151
	H33/500-HG	Tr500 x 5	470	480	630	80	99	M8	6.5	12	189
500	H39/530-HG	Tr530 x 6	500	216	630	68	89	M8	6	12	89
	H30/530-HG	Tr530 x 6	500	265	630	68	89	M8	6	12	103
	H240/530-HG	Tr530 x 6	500	343	630	68	89	M8	6	12	115
	H31/530-HG	Tr530 x 6	500	364	670	80	102	M8	6	12	161
	H32/530-HG	Tr530 x 6	500	440	670	80	102	M8	6	12	167
	H241/530-HG	Tr530 x 6	500	447	670	80	102	M8	6	12	192
	H33/530-HG	Tr530 x 6	500	504	670	80	102	M8	6	12	215

ADAPTER SLEEVES

with locknut and locking washer



Hydraulic adapter sleeve
Mounting Dimension

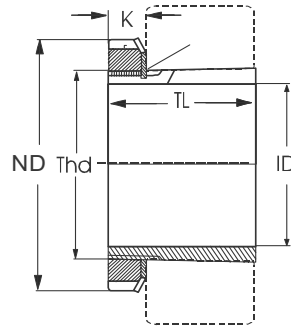


Taper 1:12
(taper 1:30 for H240, H241)

Shaft mm	Symbol	Dimensions						R _o	e	t	Appx. Weight Kg
		Thd	ID	TI	ND	k	k1				
530	H39/560	Tr560 x 6	530	227	650	75	96	M8	6	12	95.6
	H30/560	Tr560 x 6	530	282	650	75	96	M8	6	12	112
	H240/560	Tr560 x 6	530	358	650	75	96	M8	6	12	124
	H31/560	Tr560 x 6	530	377	710	85	107	M8	6	12	184
	H32/560	Tr560 x 6	530	462	710	85	107	M8	6	12	218
	H241/560	Tr560 x 6	530	468	710	85	107	M8	6	12	195
	H33/560	Tr560 x 6	530	535	710	85	107	M8	6	12	250
560	H39/600	Tr600 x 6	560	239	700	75	96	G1/8	8	12	129
	H30/600	Tr600 x 6	560	289	700	75	96	G1/8	8	12	149
	H240/600	Tr600 x 6	560	377	700	75	96	G1/8	8	12	171
	H31/600	Tr600 x 6	560	399	750	85	107	G1/8	8	12	234
	H32/600	Tr600 x 6	560	487	750	85	107	G1/8	8	12	279
	H241/600	Tr600 x 6	560	490	750	85	107	G1/8	8	12	249
	H33/600	Tr600 x 6	560	561	750	85	107	G1/8	8	12	320
600	H39/630	Tr630 x 6	600	254	730	75	96	M8	6	12	123
	H30/630	Tr630 x 6	600	301	730	75	96	M8	6	12	139
	H240/630	Tr630 x 6	600	395	730	75	96	M8	6	12	157
	H31/630	Tr630 x 6	600	424	800	95	117	M8	6	12	251
	H32/630	Tr630 x 6	600	521	800	95	117	M8	6	12	297
	H241/630	Tr630 x 6	600	525	800	95	117	M8	6	12	263
	H33/630	Tr630 x 6	600	597	800	95	117	M8	6	12	338
630	H39/670	Tr670 x 6	630	264	780	80	101	G1/8	8	12	166
	H30/670	Tr670 x 6	630	324	780	80	101	G1/8	8	12	194
	H240/670	Tr670 x 6	630	418	780	80	101	G1/8	8	12	218
	H31/670	Tr670 x 6	630	456	850	106	128	G1/8	8	12	341
	H32/670	Tr670 x 6	630	548	850	106	128	G1/8	8	12	355
	H241/670	Tr670 x 6	630	558	850	106	128	G1/8	8	12	402
	H33/670	Tr670 x 6	630	635	850	106	128	G1/8	8	12	453
670	H39/710	Tr710 x 7	670	286	830	90	111	G1/8	8	12	200
	H30/710	Tr710 x 7	670	342	830	90	111	G1/8	8	12	228
	H240/710	Tr710 x 7	670	438	830	90	111	G1/8	8	12	254
	H31/710	Tr710 x 7	670	467	900	106	131	G1/8	8	12	376
	H32/710	Tr710 x 7	670	572	900	106	131	G1/8	8	12	444
	H241/710	Tr710 x 7	670	577	900	106	131	G1/8	8	12	397
	H33/710	Tr710 x 7	670	652	900	106	131	G1/8	8	12	501

ADAPTER SLEEVES

suitable for inch size shaft

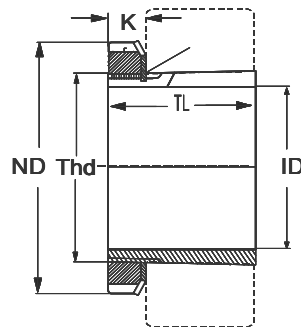


with lock washer MB
taper 1 : 12

Shaft mm	Symbol	Dimensions					Appx. Weight Kg.	Matching Bearings Size
		Thd	ID	TL	ND	k		
¾	HE 205	25	19.05	26	38	8	0.07	1205K 20205K
	HE 305	25	19.05	29	38	8	0.08	2205K 1305K 20305K 22205K
	HE 2305	25	19.05	35	38	8	0.09	2305K
1	HE 206	30	25.40	27	45	8	0.13	1206K 20206
	HE 306	30	25.40	31	45	8	0.14	2206K 1306K 20306K 22206K
	HE 2306	30	25.40	38	45	8	0.17	2306K
1 ¼	HE 208	40	31.75	31	58	10	0.17	1208K 20208K
	HE 308	40	31.75	36	58	10	0.19	2208K 1308K 20308K 21308K 22208K
	HE 2308	40	31.75	46	58	10	0.24	2308K 22308K
1 ½	HE 209	45	38.10	33	65	11	0.23	1209K 20209K
	HE 309	45	38.10	39	65	11	0.25	2209K 1309K 20309K 21309K 22209K
	HE 2309	45	38.10	50	65	11	0.28	2309K 22309K
1 ¾	HE 3210	50	44.45	35	70	12	0.27	1210K 20210K
	HE 310	50	44.45	42	70	12	0.30	2210K 1310K 20310K 21310K 22210K
	HE 2310	50	44.45	55	70	12	0.36	2310K 22310K
2	HE 211	55	50.80	37	75	12	0.31	1211K 20211K
	HE 311	55	50.80	45	75	12	0.35	2211K 1311K 20311K 21311K 22211K
	HE 2311	55	50.80	59	75	12	0.42	2311K 22311K
2 ¼	HE 213	65	57.15	40	85	14	0.40	1213K 20213K
	HE 313	65	57.15	50	85	14	0.46	2213K 1313K 20313K 21313K 22213K
	HE 2313	65	57.15	65	85	14	0.56	2313K 22313K
2 ½	HE 215	75	63.5	43	98	15	0.71	1215K 20215K
	HE 315	75	63.5	55	98	15	0.83	2215K 1315K 20315K 21315K 22215K
	HE 2315	75	63.5	73	98	15	1.05	2315K 22315K
2 ¾	HE 216	80	69.85	46	105	17	0.88	1216K 20216K
	HE 316	80	69.85	59	105	17	1.03	2216K 1316K 20316K 21316K 22216K
	HE 2316	80	69.85	78	105	17	1.28	2316K 22316K
3	HE 217	85	76.2	50	110	18	1.02	1217K 20217K
	HE 317	85	76.2	63	110	18	1.18	2217K 1317K 20317K 21317K 22217K
	HE 2317	85	76.2	82	110	18	1.45	2317K 22317K
3 ¼	HE 218	90	82.55	52	120	18	1.19	1218K 20218K
	HE 318	90	82.55	65	120	18	1.39	2218K 1318K 20318K 21318K 22218K
	HE 2318	90	82.55	86	120	18	1.69	2318K 22318K
3 ½	HE 220	100	88.9	58	130	20	1.49	1220K 20220K
	HE 320	100	88.9	71	130	20	1.69	2220K 1320K 20320K 21320K 22220K
	HE 3120	100	88.9	76	130	20	1.80	23120K
	HE 2320	100	88.9	97	130	20	2.15	2320K 22320K 23220
4	HE 222	110	101.6	63	145	21	1.93	1222K 2022K
	HE 322	110	101.6	77	145	21	2.18	20322K 22222K 21322
	HE 3122	110	101.6	81	145	21	2.25	23122K
	HE 2322	110	101.6	105	145	21	2.74	2322K 22322K 23222K

ADAPTER SLEEVES

suitable for inch size shaft



with lock washer MB
taper 1 : 12

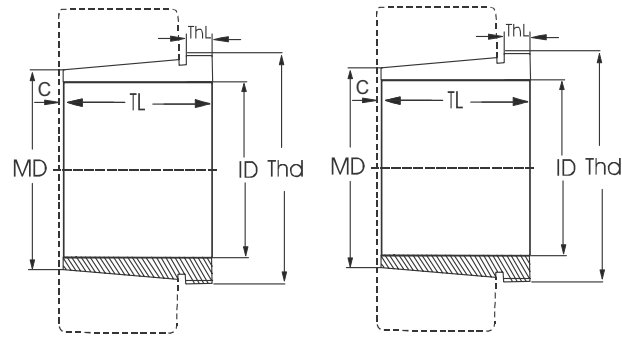


Shaft Inch	Symbol	Dimensions					Appx. Weight Kg.	Matching Bearings Size		
		Thd	ID	TL	ND	k				
4 ¼	HE 3024	120	107.95	72	145	22	1.93	20224K	23024K	22224K
	HE 3124	120	107.95	88	155	22	2.64	20324K	23124K	
	HE 2324	120	107.95	112	155	22	3.19	22324K	23224K	
4 ½	HE 3026	130	114.3	80	155	23	2.85	2026K	23026K	22226K
	HE 3126	130	114.3	92	165	23	3.66	20326K	23126K	
	HE 2326	130	114.3	121	165	23	4.60	22326K	23226K	
5	HE 3028	140	127	82	165	24	3.16	20228K	23028K	22228K
	HE 3128	140	127	97	180	24	4.34	20328K	23128K	
	HE 2328	140	127	131	180	24	3.55	22328K	23228K	
5 ¼	HE 3030	150	133.35	87	180	26	3.89	20230K	23030K	22230K
	HE 3130	150	133.35	111	195	26	5.52	20330K	23130K	
	HE 2330	150	133.35	139	195	26	6.63	23230K	22330K	
5 ½	HE 3032	160	139.7	93	190	28	5.21	20232K	23032K	22232K
	HE 3132	160	139.7	119	210	28	7.67	20332K	23132K	
	HE 2332	160	139.7	147	210	28	9.14	23232K	22332K	
6	HE 3034	170	152.4	101	200	29	5.99	20234K	23034K	22234K
	HE 3134	170	152.4	122	220	29	8.38	20334K	23134K	
	HE 2334	170	152.4	154	220	29	10.20	23234K	22334K	
6 ½	HE 3036	180	165.1	109	210	30	6.83	20236K	23036K	22236K
	HE 3136	180	165.1	131	230	30	9.50	23136K	22236K	
	HE 2336	180	165.1	161	230	30	11.30	23236K	22336K	
6 ¾	HE 3038	190	171.45	112	220	31	7.45	20238K	23038K	20338K
	HE 3138	190	171.45	141	240	31	10.80	23138K	22238K	
	HE 2338	190	171.45	169	240	31	12.60	23238K	22338K	
7	HE 3040	200	177.80	120	240	32	9.19	20240K	23040K	20340K
	HE 3140	200	177.80	150	250	32	12.10	23140K	22240K	
	HE 2340	200	177.80	176	250	32	13.90	23240K	22340K	
8	HE 3044	220	203.2	126	260	30	10.3	20244K	23044K	20344K
	HE 3144	220	203.2	161	260	35	14.7	23144K	22244K	
	HE 2344	220	203.2	186	260	35	16.8	23244K	22344K	

Adapter Sleeves with bore diameter only in multiples of 7/8" (HS) and 1/16" (HA) and with all dimensions in inches (SNW) can also be manufactured against specified order.

The sizes mentioned in the catalogue are in the present manufacturing range. Adapter Sleeves of non - standard sizes for worn -out shafts and the sizes which are not mentioned in the catalogue can be manufactured against specified order.

WITHDRAWAL SLEEVES



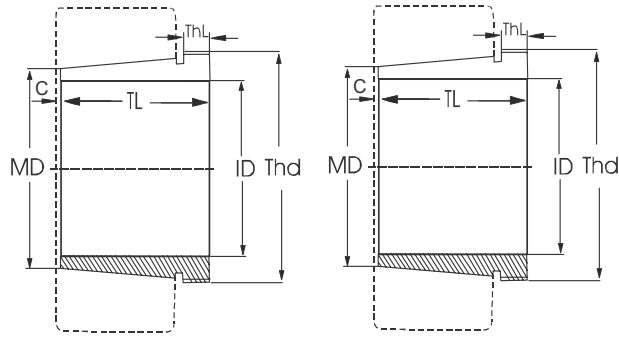
Taper 1 : 12
Distance C : prior to
pressing the sleeve in place

Taper 1 : 30
(AH. 240, AH.241)

Shaft mm	Symbol	Dimensions						Extraction Nut	Appx. Weight Kg	Matching Bearing Sizes
		MD	ID	TI	C	ThL	Thd			
35	AH 208	40	35	25	2	6	M45 x 1.5	KM 9	0.081	1208K
	AH 308	40	35	29	3	6	M45 x 1.5	KM 9	0.09	1308K 2208K 20308K 22208K
	AH 2308	40	35	40	3	7	M45 x 1.5	KM 9	0.128	2308K 22308K
40	AH 209	45	40	26	3	6	M50 x 1.5	KM 10	0.095	1209K
	AH 309	45	40	31	3	6	M50 x 1.5	KM 10	0.109	1309K 2209K 20309 21309 22209K
	AH 2309	45	40	44	3	7	M50 x 1.5	KM 10	0.164	2309K 22309K
45	AH 310	50	45	35	3	7	M55 x 2	KM 11	0.137	1310K 2210K 20310K 21310K 22210K
	AH 2310	50	45	50	3	9	M55 x 2	KM 11	0.209	2310K 22310K
50	AHX 311	55	50	37	3	7	M60 x 2	KM 12	0.161	1311K 2211K 20311K 21311K 22211K
	AHX 2311	55	50	54	3	10	M60 x 2	KM 12	0.253	2311K 22311K
55	AHX 312	60	55	40	3	8	M65 x 2	KM 13	0.189	1312 2212K 20312 21312 22212K
	AHX 2312	60	55	58	3	11	M65 x 2	KM 13	0.297	2112K 22312K
60	AH 313	65	60	42	3	8	M75 x 2	KM 15	0.253	1313K 2213K 20313K 21313K 22213K
	AH 2313	65	60	61	3	12	M75 x 2	KM 15	0.395	2313K 22313
65	AH 314	70	65	43	4	8	M80 x 2	KM 16	0.28	1314K 2214K 20314K 21314K 22214K
	AH 2314	70	65	64	4	12	M80 x 2	KM 16	0.466	2314K 22314K
70	AH 315	75	70	45	4	8	M85 x 2	KM 17	0.313	1315K 2215K 20315K 2315K 22215
	AH 2315	75	70	68	4	12	M85 x 2	KM 17	0.534	2315 22315K
75	AH 316	80	75	48	4	8	M90 x 2	KM 18	0.365	1316K 2216K 20316K 21316K 22216K
	AH 2316	80	75	71	4	12	M90 x 2	KM 18	0.597	2316K 22316K
80	AH 317	85	80	52	4	9	M95 x 2	KM 19	0.429	1317K 2217K 20317K 21317K 22217K
	AH 2317	85	80	74	4	13	M95 x 2	KM 19	0.67	2317K 22317K
85	AHX 318	90	85	53	4	9	M100 x 2	KM 20	0.461	1318K 2218K 20318K 21318K 22218K
	AHX 3218	90	85	63	4	10	M100 x 2	KM 20	0.576	23218K
	AHX 2318	90	85	79	4	14	M100 x 2	KM 20	0.779	2318K 22318K
90	AHX 319	95	90	57	4	10	M105 x 2	KM 21	0.532	1319K 2219K 20319K 21319K 22219K
	AHX 2319	95	90	85	4	16	M105 x 2	KM 21	0.886	2319K 22319K
95	AHX 320	100	95	59	4	10	M110 x 2	KM 22	0.582	1320K 2220K 20320K 21320K 22220K
	AHX 3120	100	95	64	4	11	M110 x 2	KM 22	0.65	23120K
	AHX 3220	100	95	73	4	11	M110 x 2	KM 22	0.767	23220K
	AHX 2320	100	95	90	4	16	M110 x 2	KM 22	0.998	2320K 22320K
105	AHX 322	110	105	63	4	12	M120 x 2	KM 24	0.663	20322K 21322K
	AHX 3122	110	105	68	4	11	M120 x 2	KM 24	0.76	23122K 22222K
	AHX 24122	110	105	82	9	13	M115 x 2	KM 23	0.73	24122K30
	AHX 3222	110	105	82	4	11	M125 x 2	KM 25	1.04	23222K
	AHX 2322	110	105	98	4	16	M125 x 2	KM 25	1.35	22322K
115	AHX 3024	120	115	60	4	13	M130 x 2	KM 26	0.75	23204K
	AH 24024	120	115	73	9	13	M125 x 2	KM 25	0.65	24024K30
	AHX 3124	120	115	75	4	12	M130 x 2	KM 26	0.95	23124K 22224K
	AH 24124	120	115	93	9	13	M130x 2	KM 26	1.00	24124K30
	AHX 3224	120	115	90	4	13	M135 x 2	KM 27	1.3	23224K
	AHX 2324	120	115	105	4	17	M135 x 2	KM 27	1.6	22324K

Withdrawal Sleeves will be supplied without extraction nut. It must be ordered separately if needed.

WITHDRAWAL SLEEVES



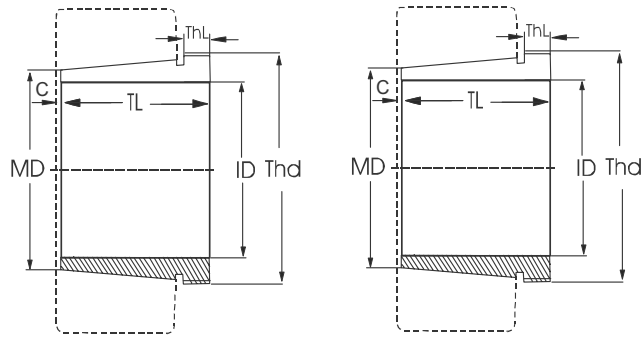
Taper 1 : 12
Distance C : prior to
pressing the sleeve in place

Taper 1 : 30
(AH. 240, AH.241)

Shaft mm	Symbol	Dimensions						Extraction Nut	Appx. Weight Kg	Matching Bearing Sizes
		MD	ID	TL	C	ThL	Thd			
125	AHX 3026	130	125	67	4	14	M 140 x 2	KM 28	0.93	23026K
	AH 24026	130	125	83	10	14	M 135 x 2	KM 27	0.84	24026K30
	AHX 3126	130	125	78	4	12	M 140 x 2	KM 28	1.08	23126K
	AH 24126	130	125	94	10	14	M 140 x 2	KM 28	1.11	24126K30
	AHX 3226	130	125	98	4	15	M 145 x 2	KM 29	1.58	23226K
	AHX 2326	130	125	115	4	19	M 145 x 2	KM 29	1.97	22326K
135	AHX 3028	140	135	68	5	14	M 150 x 2	KM 30	1.01	23028K
	AH 24028	140	135	83	10	14	M 145 x 2	KM 29	0.91	24028K30
	AHX 3128	140	135	83	5	14	M 150 x 2	KM 30	1.28	23128K
	AH 24128	140	135	99	10	14	M 150 x 2	KM 30	1.25	24128K30
	AHX 3228	140	135	104	5	15	M 155 x 3	KM 31	1.84	23228K
	AHX 2328	140	135	125	5	20	M 155 x 3	KM 31	2.33	22328K
145	AHX 3030	150	145	72	5	15	M 160 x 3	KM 32	1.15	23030K
	AH 24030	150	145	90	11	15	M 155 x 3	KM 31	1.04	24030K30
	AHX 3130	150	145	96	5	15	M 165 x 3	KM 33	1.79	23130K
	AH 24130	150	145	115	11	15	M 160 x 3	KM 32	1.56	24130K30
	AHX 3230	150	145	114	5	17	M 165 x 3	KM 33	2.22	23230K
	AHX 2330	150	145	135	5	24	M 165 x 3	KM 33	2.82	22330K
150	AH 3032	160	150	77	5	16	M 170 x 3	KM 34	2.06	23032K
	AH 24032	160	150	95	11	15	M 170 x 3	KM 34	2.33	24032K30
	AH 3132	160	150	103	5	16	M 180 x 3	KM 36	3.21	23132K
	AH 24132	160	150	124	11	15	M 170 x 3	KM 34	3.00	24132K30
	AH 3232	160	150	124	6	20	M 180 x 3	KM 36	4.08	23232K
	AH 2332	160	150	140	6	24	M 180 x 3	KM 36	4.72	22332K
160	AH 3034	170	160	85	5	17	M 180 x 3	KM 36	2.43	23034K
	AH 24034	170	160	106	11	16	M 180 x 3	KM 36	2.80	24034K30
	AH 3134	170	160	104	5	16	M 190 x 3	KM 38	3.40	23134K
	AH 24134	170	160	125	11	16	M 180 x 3	KM 36	3.21	24134K30
	AH 3234	170	160	134	6	24	M 190 x 3	KM 38	4.80	23234K
	AH 2334	170	160	146	6	24	M 190 x 3	KM 38	5.25	22334K
170	AH 2236	180	170	105	5	17	M 200 x 3	KM 40	3.73	22236K
	AH 3036	180	170	92	6	17	M 190 x 3	KM 38	2.81	23036K
	AH 24036	180	170	116	11	16	M 190 x 3	KM 38	3.10	24036K30
	AH 3136	180	170	116	6	19	M 200 x 3	KM 40	4.22	23136K
	AH 24136	180	170	134	11	16	M 190 x 3	KM 38	3.68	24136K30
	AH 3236	180	170	140	6	25	M 200 x 3	KM 40	5.32	23236K
AH 2336	180	170	154	6	26	M 200 x 3	KM 40	5.83	22336K	
180	AH 2238	190	180	112	5	18	Tr 210 x 4	HM 42T	4.25	22238K
	AH 3038	190	180	96	6	18	Tr 205 x 4	HML 41T	3.32	23038K
	AH 24038	190	180	118	13	18	M 200 x 3	KM 40	3.50	24038K30
	AH 3138	190	180	125	6	20	Tr 210 x 4	HM 42T	4.89	23138K
	AH 24138	190	180	146	13	18	M 200 x 3	KM 40	4.28	24138K30
	AH 3238	190	180	145	7	25	Tr 210 x 4	HM 42T	5.90	23238K
AH 2338	190	180	160	7	26	Tr 210 x 4	HM 42T	6.63	22338K	

Withdrawal Sleeves will be supplied without extraction nut. It must be ordered separately if needed.

WITHDRAWAL SLEEVES



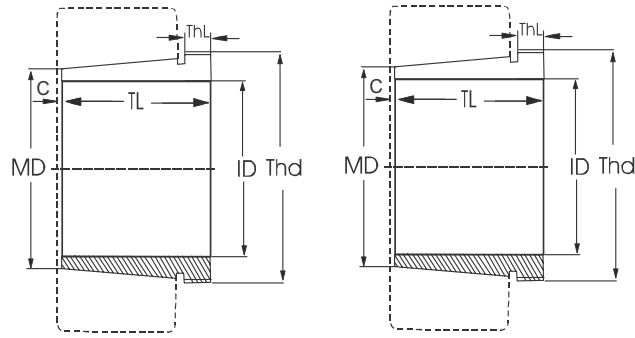
Taper 1 : 12
Distance C : prior to pressing
the sleeve in place

Taper 1 : 30
(AH. 240, AH.241)

Shaft mm	Symbol	Dimensions						Extraction Nut	Appx. Weight kg	Matching Bearing Sizes
		MD	ID	TL	C	ThL	Thd			
190	AH 3040	200	190	102	6	19	Tr 215 x 4	HML 43T	3.8	23040K
	AH 2240	200	190	118	5	19	Tr 220 x 4	HM 44T	4.68	22240K
	AH 24040	200	190	127	13	18	Tr 210 x 4	HM 42T	3.93	24040K30
	AH 3140	200	190	134	6	21	Tr 220 x 4	HM 44T	5.49	23140K
	AH 24140	200	190	158	13	18	Tr 210 x 4	HM 42T	5.1	24140K30
	AH 3240	200	190	153	7	24	Tr 220 x 4	HM 44T	6.68	23240K
	AH 2340	200	190	170	7	30	Tr 220 x 4	HM 44T	7.54	22340K
200	AH 3044	220	200	111	6	20	Tr 235 x 4	HML 47T	7.4	23044K
	AH 2244	220	200	130	6	20	Tr 240 x 4	HM 48T	9.1	22244K
	AH 24044H	220	200	138	14	20	Tr 230 x 4	HM 46T	8.25	24044K30
	AH 3144	220	200	145	6	23	Tr 240 x 4	HM 48T	10.4	23144K
	AH 24144H	220	200	170	14	20	Tr 230 x 4	HM 46T	10.2	24144K30
	AH 2344	220	200	181	8	30	Tr 240 x 4	HM 48T	13.5	23244K 22344K
220	AH 3048	240	220	116	7	21	Tr 260 x 4	HML 52T	8.75	23048K
	AH 2248	240	220	144	6	21	Tr 260 x 4	HM 52T	11.1	22248K
	AH 24048	240	220	138	15	20	Tr 250 x 4	HM 50T	9.0	24048K30
	AH 3148	240	220	154	7	25	Tr 260 x 4	HM 52T	12.0	23148K
	AH 24148	240	220	180	15	20	Tr 260 x 4	HM 52T	12.5	24148K30
	AH 2348	240	220	189	8	30	Tr 260 x 4	HM 52T	15.5	23248K 22348K
240	AH 3052	260	240	128	7	23	Tr 280 x 4	HML 56T	10.7	23052K
	AH 2252	260	240	155	6	23	Tr 290 x 4	HM 58T	14.0	22252K
	AH 24052	260	240	162	16	23	Tr 270 x 4	HM 54T	11.8	24052K 30
	AH 3152	260	240	172	7	26	Tr 290 x 4	HM 58T	16.2	23152K
	AH 24152	260	240	202	16	22	Tr 280 x 4	HM 56T	15.4	24152K30
	AH 2352	260	240	205	8	30	Tr 290 x 4	HM 58T	19.6	23252K 22352K
260	AH 3056	280	260	131	8	24	Tr 300 x 4	HML 60T	12.0	23056K
	AH 2256	280	260	155	8	24	Tr 310 x 5	HM 62T	15.2	22256K
	AH 24056	280	260	162	17	22	Tr 290 x 4	HM 58T	12.8	24056K 30
	AH 3156	280	260	175	8	28	Tr 310 x 5	HM 62T	17.5	23156K
	AH 24156	280	260	202	17	22	Tr 300 x 4	HM 60T	16.3	24156K30
	AH 2356	280	260	212	8	30	Tr 310 x 5	HM 62T	21.6	23256K 22356K
280	AH 3060	300	280	145	8	26	Tr 320 x 5	HML 64T	14.4	23060K
	AH 2260	300	280	170	8	26	Tr 330 x 5	HM 66T	18.1	22260K
	AH 24060	300	280	184	18	24	Tr 310 x 5	HM 62T	15.5	24060K30
	AH 3160	300	280	192	8	30	Tr 330 x 5	HM 66T	20.8	23160K
	AH 24160	300	280	224	18	24	Tr 320 x 5	HM 64T	19.5	24160K30
	AH 3260	300	280	228	8	34	Tr 330 x 5	HM 66T	26.0	23260K
300	AH 2064	320	300	149	8	27	Tr 345 x 5	HML 69T	16.0	23064K
	AH 24064	320	300	184	18	24	Tr 330 x 5	HM 66T	16.6	24064K 30
	AH 3164	320	300	209	8	31	Tr 350 x 5	HM 70T	24.5	23164K
	AH 24164	320	300	242	18	24	Tr 340 x 5	HM 68T	21.5	24164K30
	AH 3264	320	300	246	8	26	Tr 350 x 5	HM 70T	30.6	23264K

Withdrawal Sleeves will be supplied without extraction nut. It must be ordered separately if needed.

WITHDRAWAL SLEEVES



Taper 1 : 12
Distance C : prior to
pressing the sleeve in place

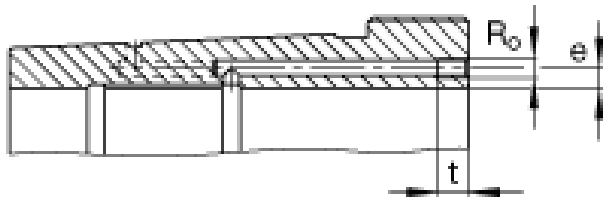
Taper 1 : 30
(AH. 240, AH.241)

Shaft mm	Symbol	Dimensions						Extraction Nut	Appx. Weight Kg	Matching Bearing Sizes
		MD	ID	TI	C	Thl	Thd			
320	AH 3068	340	320	162	9	28	Tr 365 x 5	HML73T	19.5	23068K
	AH 24068	340	320	206	19	26	Tr 360 x 5	HM 72T	21.7	24068K30
	AH 3168	340	320	225	9	33	Tr 370 x 5	HM 74T	29.0	23168K
	AH 24168	340	320	269	19	26	Tr 360 x 5	HM 72T	27.1	24168K30
	AH 3268	340	320	264	9	38	Tr 370 x 5	HM 74T	35.4	23268K
340	AH 3072	360	340	167	9	30	Tr 385 x 5	HML77T	21	23072K
	AH 3172	360	340	229	9	35	Tr 400 x 5	HM 80T	33	23172K
	AH 24172	360	340	269	20	26	Tr 380 x 5	HM 76T	29.6	24172K30
	AH 3272	360	340	274	9	40	Tr 400 x 5	HM 80T	41.5	23272K
360	AH 3076	380	360	170	10	31	Tr 410 x 5	HML82T	23.2	23076K
	AH 3176	380	360	232	10	36	Tr 420 x 5	HM 84T	35.7	23176K
	AH 24176	380	360	271	20	28	Tr 400 x 5	HM 80T	31.3	24176K30
	AH 3276	380	360	284	10	42	Tr 420 x 5	HM 84T	45.6	23276K
380	AH 3080	400	380	183	10	33	Tr 430 x 5	HML86T	27.3	23080K
	AH 3180	400	380	240	10	38	Tr 440 x 5	HM 88T	39.5	23180K
	AH 24180	400	380	278	20	28	Tr 420 x 5	HM 84T	34.4	24180K30
	AH 3280	400	380	302	10	44	Tr 440 x 5	HM 88T	51.7	23280K
400	AH 3084	420	400	186	10	34	Tr 450 x 5	HML90T	29	23084K
	AH 3184	420	400	266	10	40	Tr 460 x 5	HM 92T	46.5	23184K
	AH 24184	420	400	310	22	30	Tr 440 x 5	HM 88T	40.3	24184K30
	AH 3284	420	400	321	10	46	Tr 460 x 5	HM 92T	58.9	23284K

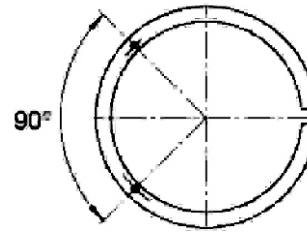
Oil ducts and pump connections shall be provided for Withdrawal Sleeves from AH 3032 to AH 3284 on request. Hydraulic Withdrawal Sleeves shall be ordered with an inclusion of Letter 'O' or suffix of H with usual symbol (e.g. AOH 3032 (or) AH 3032 H) The details of pump connection are given in the next page.

Symbol	Pump Connection Size	Distance from the sleeve bore	Tap Hole Depth
AH 3132 H to AH 2340 H	M6	4.5	9
AH 3032 H to AH 3040 H	M6	4.2	9
AH 3044 H to AH 3284	R1/8"	8.5	15
AH 24044 H to AH 24064 H & AH 24144 H	M6	8	9
AH 24148 H to AH 24184 H	R1/8"	8.5	15
AH 24068H to AH 24084 H	R1/8"	8.5	15

WITHDRAWAL SLEEVES



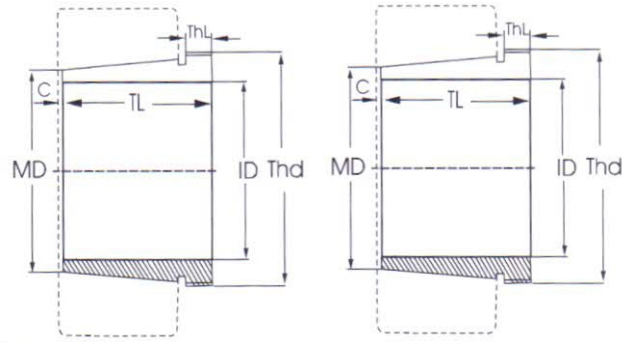
Hydraulic withdrawal sleeve
Mounting dimensions



Pump connectors for
hydraulic withdrawal sleeve

Shaft mm	Symbol	Dimensions						R _o	e	t	Appx. Weight Kg
		MD	ID	TI	C	Thl	Thd				
420	AH3988	440	420	145	8	25	Tr460 x 5	G1/8	8,5	12	21.2
	AHX3088G	440	420	194	11	35	Tr460 x 5	G1/8	8,5	12	30
	AHX3088	440	420	194	11	35	Tr470 x 5	G1/8	8,5	12	31.9
	AH24088	440	420	242	22	30	Tr460 x 5	G1/8	8,5	12	32.8
	AHX3188G	440	420	270	11	42	Tr460 x 5	G1/8	8,5	12	44.9
	AHX3188	440	420	270	11	42	Tr480 x 5	G1/8	8,5	12	49.7
	AH24188	440	420	310	22	30	Tr460 x 5	G1/8	8,5	12	42.9
	AHX3288G	440	420	330	11	48	Tr460 x 5	G1/8	8,5	12	58.2
	AHX3288	440	420	330	11	48	Tr480 x 5	G1/8	8,5	12	63.7
	AH3388	440	420	393	11	48	Tr480 x 5	G1/8	8,5	12	79.6
440	AH3992	460	440	145	8	25	Tr480 x 5	G1/8	8,5	12	22.2
	AHX3092G	460	440	202	11	37	Tr480 x 5	G1/8	8,5	12	32.9
	AHX3092	460	440	202	11	37	Tr490 x 5	G1/8	8,5	12	35.1
	AH24092	460	440	250	23	32	Tr480 x 5	G1/8	8,5	12	35.6
	AHX3192G	460	440	285	11	43	Tr480 x 5	G1/8	8,5	12	50.3
	AHX3192	460	440	285	11	43	Tr510 x 6	G1/8	8,5	12	58
	AH24192	460	440	332	23	32	Tr480 x 5	G1/8	8,5	12	48.7
	AHX3292G	460	440	349	11	50	Tr480 x 5	G1/8	8,5	12	65.6
	AHX3292	460	440	349	11	50	Tr510 x 6	G1/8	8,5	12	74.6
	AH3392	460	440	415	11	50	Tr510 x 6	G1/8	8,5	12	92.6
460	AH3996	480	460	158	9	28	Tr500 x 5	G1/8	8,5	12	25.7
	AHX3096G	480	460	205	12	38	Tr500 x 5	G1/8	8,5	12	35
	AHX3096	480	460	205	12	38	Tr520 x 6	G1/8	8,5	12	39.7
	AH24096	480	460	250	23	32	Tr500 x 5	G1/8	8,5	12	37.2
	AHX3196G	480	460	295	12	45	Tr500 x 5	G1/8	8,5	12	54.8
	AHX3196	480	460	295	12	45	Tr530 x 6	G1/8	8,5	12	63.3
	AH24196G	480	460	340	23	32	Tr500 x 5	G1/8	8,5	12	52.2
	AH24196	480	460	343	25	35	Tr500 x 5	G1/8	8,5	12	52.9
	AHX3296G	480	460	364	12	52	Tr500 x 5	G1/8	8,5	12	72.4
	AHX3296	480	460	364	12	52	Tr530 x 6	G1/8	8,5	12	82.2
	AH3396	480	460	427	12	52	Tr530 x 6	G1/8	8,5	12	100

WITHDRAWAL SLEEVES



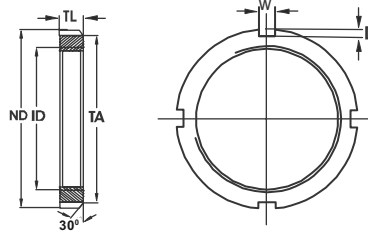
Taper 1 : 12
Distance C : prior to
pressing the sleeve in place

Taper 1 : 30
(AH. 240, AH.241)



Shaft mm	Symbol	Dimensions						R _o	e	t	Appx. Weight Kg
		MD	ID	TI	C	Thl	Thd				
480	AH39/500G	500	480	162	10	32	Tr530 x 6	G1/8	8,5	12	29.8
	AH39/500G	500	480	162	10	32	Tr520 x 6	G1/8	8,5	12	27.7
	AHX30/500G	500	480	209	12	40	Tr530 x 6	G1/8	8,5	12	39.9
	AHX30/500	500	480	209	12	40	Tr540 x 6	G1/8	8,5	12	42.5
	AH240/500G	500	480	253	23	35	Tr530 x 6	G1/8	8,5	12	41.7
	AH240/500	500	480	253	23	35	Tr520 x 6	G1/8	8,5	12	39.5
	AHX31/500G	500	480	313	12	47	Tr530 x 6	G1/8	8,5	12	64.7
	AHX31/500	500	480	313	12	47	Tr550 x 6	G1/8	8,5	12	70.9
	AH241/500G	500	480	360	23	35	Tr530 x 6	G1/8	8,5	12	60.5
	AH241/500	500	480	362	25	37	Tr520 x 6	G1/8	8,5	12	58.8
	AHX32/500G	500	480	393	12	54	Tr530 x 6	G1/8	8,5	12	87.3
	AHX32/500	500	480	393	12	54	Tr550 x 6	G1/8	8,5	12	94.4
	AH33/500	500	480	442	12	54	Tr550 x 6	G1/8	8,5	12	110
500	AH39/530G	530	500	175	10	37	Tr560 x 6	G1/4	10	15	45.6
	AH39/530	530	500	175	10	37	Tr550 x 6	G1/4	10	15	43.1
	AH30/530A	530	500	230	12	45	Tr560 x 6	G1/4	10	15	61.7
	AH240/530G	530	500	285	24	35	Tr560 x 6	G1/4	8,5	15	67.5
	AH240/530	530	500	290	25	40	Tr550 x 6	G1/4	8,5	15	66.8
	AH31/530A	530	500	325	12	53	Tr560 x 6	G1/4	10	15	92.3
	AH241/530G	530	500	370	24	35	Tr560 x 6	G1/4	10	15	89
	AH241/530	530	500	375	25	40	Tr550 x 6	G1/4	10	15	88.2
	AH32/530AG	530	500	412	12	57	Tr560 x 6	G1/4	10	15	124
	AH32/530A	530	500	412	12	57	Tr580 x 6	G1/4	10	15	132
	AH33/530	530	500	469	12	57	Tr580 x 6	G1/4	10	15	155

LOCK NUTS / SHAFT NUTS / EXTRACTION NUTS

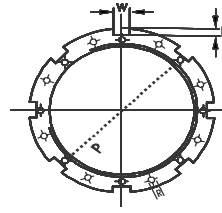
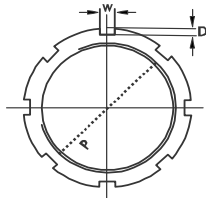
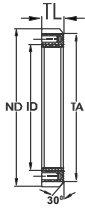


Series KM, KML, HM, HML, HMLL

Symbol	ID	ND	TL	TA	W	D
KM 0	M 10 x 0.75	18	4	13.5	3	2
KM 1	M 12 x 1	22	4	17	3	2
KM 2	M 15 x 1	25	5	21	4	2
KM 3	M 17 x 1	28	5	24	4	2
KM 4	M 20 x 1	32	6	26	4	2
KM 5	M 25 x 1.5	38	7	32	5	2
KM 6	M 30 x 1.5	45	7	38	5	2
KM 7	M 35 x 1.5	52	8	44	5	2
KM 8	M 40 x 1.5	58	9	50	6	2.5
KM 9	M 45 x 1.5	65	10	56	6	2.5
KM 10	M 50 x 1.5	70	11	61	6	2.5
KM 11	M 55 x 2	75	11	67	7	3
KM 12	M 60 x 2	80	11	73	7	3
KM 13	M 65 x 2	85	12	79	7	3
KM 14	M 70 x 2	92	12	85	8	3.5
KM 15	M 75 x 2	98	13	90	8	3.5
KM 16	M 80 x 2	105	15	95	8	3.5
KM 17	M 85 x 2	110	16	102	8	3.5
KM 18	M 90 x 2	120	16	108	10	4
KM 19	M 95 x 2	125	17	113	10	4
KM 20	M 100 x 2	130	18	120	10	4
KM 21	M 105 x 2	140	18	126	12	5
KM 22	M 110 x 2	145	19	133	12	5
KM 23	M 115 x 2	150	19	137	12	5
KM 24	M 120 x 2	155	20	138	12	5
KML 24	M 120 x 2	145	20	135	12	5
KM 25	M 125 x 2	160	21	148	12	5
KM 26	M 130 x 2	165	21	149	12	5
KML 26	M 130 x 2	155	21	145	12	5
KM 27	M 135 x 2	175	22	160	14	6
KM 28	M 140 x 2	180	22	160	14	6
KML 28	M 140 x 2	165	22	155	12	5
KM 29	M 145 x 2	190	24	171	14	6
KM 30	M 150 x 2	195	24	171	14	6
KML 30	M 150 x 2	180	24	170	14	5
KM 31	M 155 x 3	200	25	182	16	7
KM 32	M 160 x 3	210	25	182	16	7
KML 32	M 160 x 3	190	25	180	14	5
KM 33	M 165 x 3	210	26	193	16	7

Symbol	ID	ND	TL	TA	W	D
KM 34	M 170 x 3	220	26	193	16	7
KML 34	M 170 x 3	200	26	190	16	5
KM 36	M 180 x 3	230	27	203	18	8
KML36	M 180 x 3	210	27	200	16	5
KM38	M 190 x 3	240	28	214	18	8
KML38	M 190 x 3	220	28	210	16	5
KM 40	M 200 x 3	250	29	226	18	8
KML 40	M 200 x 3	240	29	222	18	8
HML 41T	Tr 205 x 4	250	30	232	18	8
HM 42T	Tr 210 x 4	270	30	238	20	10
HML 43T	Tr 215x 4	260	30	242	20	9
HM 44T	Tr 220 x 4	280	32	250	20	10
HM 46T	Tr 230 x 4	290	34	260	20	10
HM 48T	Tr 240 x 4	300	34	270	20	10
HM 50T	Tr 250 x 4	320	35	290	20	10
HM 52T	Tr 260 x 4	330	35	300	24	12
HML 52T	Tr 260 x 4	310	30	290	20	10
HM 54T	Tr 270 x 4	340	36	310	24	12
HM 56T	Tr 280 x 4	350	36	320	24	12
HML 56T	Tr 280 x 4	330	30	310	24	10
HM 58T	Tr 290 x 4	365	36	335	24	12
HMLL 59T	Tr 295 x 4	340	27	320	20	10
HM 60T	Tr 300 x 4	370	36	340	24	12
HML 60T	Tr 300 x 4	360	31	336	24	12
HM 62T	Tr 310 x 5	380	36	350	24	12
HMLL 63T	Tr 315 x 5	370	28	350	20	10
HM 64T	Tr 320 x 5	400	40	370	24	12
HML 64T	Tr 320 x 5	380	32	356	24	12
HM 66T	Tr 330 x 5	410	40	380	28	15
HML 67T	Tr 335 x 5	390	28	370	20	10
HM 68T	Tr 340 x 5	420	42	390	28	15
HM 69T	Tr 345 x 5	410	33	384	28	13
HM 70T	Tr 350 x 5	430	42	400	28	15
HML 72T	Tr 360 x 5	440	45	410	28	15
HML 73T	Tr 365 x 5	430	35	404	28	13
HM 74T	Tr 370 x 5	450	45	420	28	15
HM 76T	Tr 380 x 5	470	45	430	32	18
HML 77T	Tr 385 x 5	450	37	422	28	14
HML 80T	Tr 400 x 5	500	46	460	32	18

MOUNTING NUTS WITH MOUNTING BOLTS



Series KMHS, KM30.HS, HM31.HS

Symbol	ID	ND	TL	TA	W	D	H	P	Mounting bolt	Mounting Plate
KM 32 HS	M 160 x 3	210	25	182	16	7	M 10	178	M 10 x 45	MB 32 H
KM 33 HS	M 165 x 3	210	26	193	16	7	M 10	183	M 10 x 45	
KM 34 HS	M 170 x 3	220	26	193	16	7	M 10	188	M 10 x 45	MB 34 H
KM 36 HS	M 180 x 3	230	27	203	18	8	M 10	198	M 10 x 45	MB 36 H
KM 38 HS	M 190 x 3	240	28	214	18	8	M 10	208	M 10 x 45	MB 38 H
KM 40 HS	M 200 x 3	250	29	226	18	8	M 10	218	M 10 x 45	MB 40 H
HM 3044 HS	Tr 220 x 4	260	30	242	20	9	M 10	236	M 10 x 45	MB 44 H
HM 3144 HS	Tr 220 x 4	280	32	250	20	10	M 16	246	M 16 x 60	MB 44 H
HM 3048 HS	Tr 240 x 4	290	34	270	20	10	M 12	260	M 12 x 60	MB 48 H
HM 3148 HS	Tr 240 x 4	300	34	270	20	10	M 16	266	M 16 x 60	MB 48 H
HM 3052 HS	Tr 260 x 4	310	34	290	20	10	M 12	280	M 12 x 60	MB 52 H
HM 3152 HS	Tr 260 x 4	330	36	300	24	12	M 16	286	M 16 x 60	MB 52 H
HM 3056 HS	Tr 280 x 4	330	38	310	24	10	M 12	300	M 12 x 60	MB 56 H
HM 3156 HS	Tr 280 x 4	350	38	320	24	12	M 16	306	M 16 x 60	MB 56 H
HM 3060 HS	Tr 300 x 4	360	42	336	24	12	M 12	322	M 12 x 60	MB 60 H
HM 3160 HS	Tr 300 x 4	380	40	340	24	12	M 16	330	M 16 x 60	MB 60 H
HM 3064 HS	Tr 320 x 5	380	42	356	24	12	M 12	342	M 12 x 60	MB 64 H
HM 3164 HS	Tr 320 x 5	400	42	360	24	12	M 16	350	M 16 x 60	MB 64 H
HM 3068 HS	Tr 340 x 5	400	45	376	24	12	M 12	362	M 12 x 70	MB 68 H
HM 3168 HS	Tr 340 x 5	440	55	400	28	15	M 20	374	M 20 x 80	MB 68 H
HM 3072 HS	Tr 360 x 5	420	45	394	28	13	M 12	382	M 12 x 70	MB 72 H
HM 3172 HS	Tr 360 x 5	460	58	420	28	15	M 20	394	M 20 x 80	MB 72 H
HM 3076 HS	Tr 380 x 5	450	48	422	28	14	M 16	406	M 16 x 70	MB 76 H
HM 3176 HS	Tr 380 x 5	490	60	440	32	18	M 20	416	M 20 x 80	MB 76 H
HM 3080 HS	Tr 400 x 5	470	52	442	28	14	M 16	426	M 16 x 70	MB 80 H
HM 3180 HS	Tr 400 x 5	520	62	460	32	18	M 20	436	M 20 x 80	MB 80 H

LOCK NUTS / SHAFT NUTS

Series HM30, HM31

Symbol	ID	ND	TL	TA	W	D	Mounting bolt	Spring washer
HM 3044	Tr 220 x 4	260	30	242	20	9	M 6 x 12	B 6
HM 3144	Tr 220 x 4	280	32	250	20	10		
HM 3048	Tr 240 x 4	290	34	270	20	10	M 8 x 18	B 8
HM 3148	Tr 240 x 4	300	34	270	20	10		
HM 3052	Tr 260 x 4	310	34	290	20	10	M 8 x 18	B 8
HM 3152	Tr 260 x 4	330	36	300	24	12		
HM 3056	Tr 280 x 4	330	38	310	24	10	M 8 x 18	B 8
HM 3156	Tr 280 x 4	350	38	320	24	12		
HM 3060	Tr 300 x 4	360	42	336	24	12	M 8 x 18	B 8
HM 3160	Tr 300 x 4	380	40	340	24	12	M 10 x 20	B 10
HM 3064	Tr 320 x 5	380	42	356	24	12	M 8 x 18	B 8
HM 3164	Tr 320 x 5	400	42	360	24	12	M 10 x 20	B 10
HM 3068	Tr 340 x 5	400	45	376	24	12	M 8 x 18	B 8
Hm 3168	Tr 340 x 5	440	55	400	28	15	M 12 x 25	B 12
HM 3072	Tr 360 x 5	420	45	394	28	13	M 8 x 18	B 8
HM 3172	Tr 360 x 5	460	58	420	28	15	M 12 x 25	B 12
HM 3076	Tr 380 x 5	450	48	422	28	14	M 10 x 20	B 10
HM 3176	Tr 380 x 5	490	60	440	32	18	M 12 x 25	B 12
HM 3080	Tr 400 x 5	470	52	442	28	14	M 10 x 20	B 10
HM 3180	Tr 400 x 5	520	62	460	32	18	M 16 x 30	B 16

Locknuts of inch series (AN) and the sizes which are not mentioned in the catalogue can be manufactured against specific order



SHRIRAAM (SRI) Adapter Sleeves are manufactured with taper 1:12 and Withdrawal sleeves with taper 1:12 and 1:30 on the outer diameter with ground finish. **SHRIRAAM (SRI)** have the widest manufacturing range from 17 mm to 900 mm and also specialized in Hydraulic mounting and dismounting type sleeves as per International Standards.

SHRIRAAM (SRI) manufacturing Lock Nuts / Shaft Nuts / Extraction Nuts range from 10 mm to 900 mm. For easy mounting and dismounting of the bearing from the taper sleeve, **SHRIRAAM (SRI)** provides threaded holes with mounting screws in HM 30.HS, HM 31.HS in Shaft Nuts. The dimensional accuracies and tolerances for Adapter Sleeves, Withdrawal sleeves and Lock Nuts are maintained as per ISO : 2982 - 1 : 1995, ISO : 2982 - 2 : 2001 respectively.

Sleeves and Lock Nuts are made from the high quality steel recommended by IS 2062 -1992 and IS 1570(11)-1979. Apart from the above standard manufacturing products. **SHRIRAAM (SRI)** also manufacturing Shaft protection Sleeves, Pump Sleeves, Wear Sleeves, Plasma Coated Sleeves etc. as per requirement and specifications.

SHRIRAAM (SRI) also manufacturing non - standard sleeves for worn out Shafts and Inch series as per requirement and specifications.

SHRIRAAM INDUSTRIES

(AN ISO 9001 : 2008 CERTIFIED COMPANY)

Regd. Office & Works :

2/9, Krishna Industrial Estate, Mettukuppam,
Vanagaram, Chennai-600 095.

Phone : 23860128, 24764609 Fax : 044- 24767019

E-mail : info@sribearings.com/ shriraamind@yahoo.com